

# YOUNG

REAL ESTATE GROUP

INFO@ALYOUNG.CA | 604.533.3491

#319-20655 88 Avenue,  
Langley, B.C.

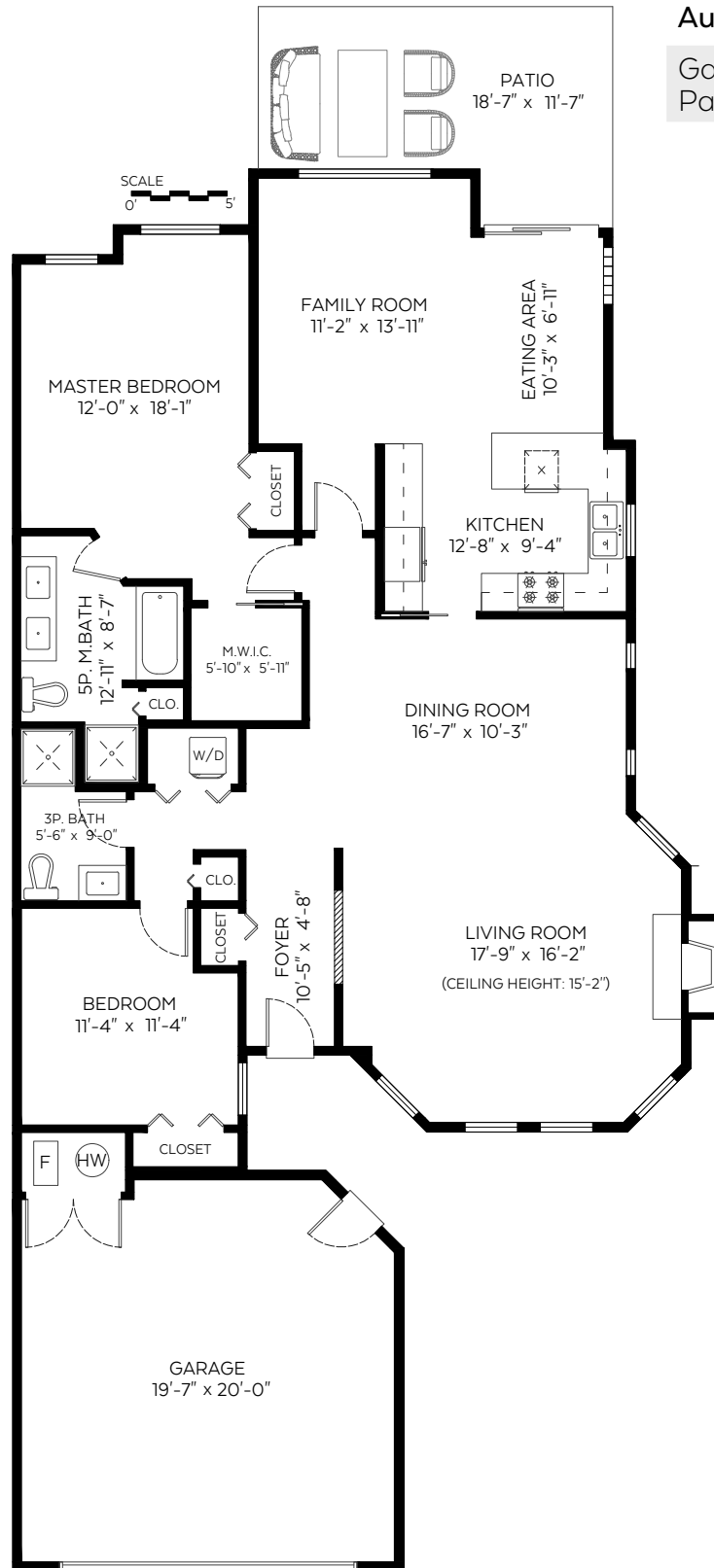
Main Floor: 1,589 sq.ft.

Ceiling Height: 9'-0"

### Auxiliary Area

Garage: 431 sq.ft.

Patio: 180 sq.ft.



Valid Until: January 28, 2022

The floor plan is not suitable for architectural/construction and is covered under E&O. © Excelsior Measuring Inc. 2021. All rights reserved for Excelsior Measuring Inc. Users shall not publish and distribute such material (in whole or in part) and/or incorporate it in other works in any form.



NORTH

